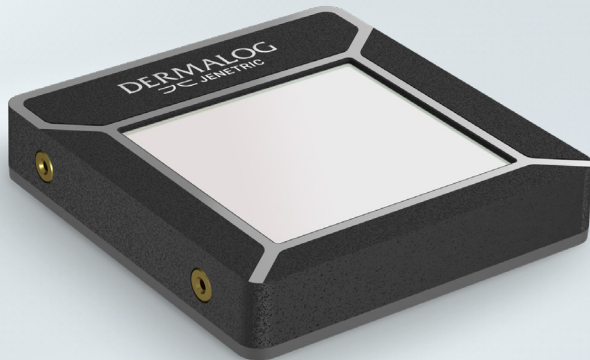


LIVETOUCH DUO

Compact FAP 45 fingerprint scanner



Outstanding Features

- > Highly compact design for portable use
- > Rugged protection
- > Operates in direct sunlight
- > FBI certified image quality

Key Benefit

LIVETOUCH DUO enables seamless integration into any portable application.

LIVETOUCH DUO: Compact FAP 45 Fingerprint Scanner

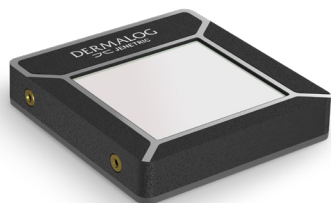
The best choice for mobile enrollment and identification

Our LIVETOUCH DUO is a highly compact FAP 45 dual fingerprint scanner that provides certified image quality for both flat and rolled fingerprints. The LIVETOUCH DUO's low weight, minimal size and low power consumption make it the best choice for mobile enrollment and identification



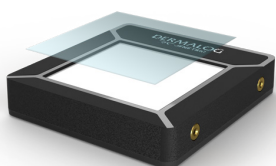
Highly Compact Design

With a thickness of only 13 mm and a total weight of only 60 g, the LIVETOUCH DUO is one of the most compact dual fingerprint scanners on the market. Each component is designed to save space and weight in portable jump kits or mobile devices.



Versatile Applications

The LIVETOUCH DUO fingerprint scanner is highly versatile. Whether for mobile border control, visitor management, passport issuance, voter registration or customer enrollment at a bank – the LIVETOUCH DUO is ideally suited for all of these applications.



Rugged Protection

LIVETOUCH DUO features a strong glass layer that protects the sensor from scratches caused by objects such as rings, pens or keys. It also makes the scanner highly resistant to abrasion from heavy use. IP65 protection ensures reliable operation in wet and dusty environments.

Product Features

- > High-resolution images at 500 ppi
- > Compact dimensions: 61.1 mm x 65 mm x 13.1 mm
- > Captures flat (1/2) and rolled fingerprints
- > Certifications: FBI, CE, FCC, RoHS
- > IP65 protection class according to DIN EN 60529
- > Operates in direct sunlight
- > Scratch resistant surface



Easy Integration

LIVETOUCH DUO's plane surface and square shape allow easy integration into any portable or mobile enrollment solution. Its four mounting points ensure a solid mechanical fixation. Powered by a USB 2.0 interface, no external power supply is required to operate the scanner.



Stable Connection

The LIVETOUCH DUO offers a fast, cutting-edge USB-C interface. Even after many plug-in cycles, the connection remains very robust and misplugging is no longer an issue. In addition, the device has a cable strain relief to prevent accidental disconnection.



Certified Image Quality

The fingerprint scanner LIVETOUCH DUO meets the specification Appendix F Mobile ID FAP 45 by the Federal Bureau of Investigation (FBI), ensuring high image quality for single/dual flat and single rolled fingerprint capture.

Specifications LIVETOUCH DUO

Technical Features

Capture Modes	Flat (1/2) and rolled fingerprints
Image Resolution	500 ppi
Scan Area (W x H)	40 mm x 38 mm (1.6" x 1.5")
Image Quality Certification	FBI EBTS Appendix F, Mobile ID FAP 45
Ingress Protection	IP 65
Infection Prevention (optional)	Antimicrobial coating (AMC) tested for abrasion and washability
Scratch Resistance	Glass protection layer against scratches tested for hardness (DIN EN ISO 6507-1:2018-4:2018) and for abrasion (DIN 55654:2015-08)
Operating Temperature	-10 °C – 55 °C (14 °F – 131 °F)
Dimensions (W x H x D)	61,1 mm x 65 mm x 13,1 mm (2.41" x 2.56" x 0.52")
Weight	60 g (0.14 lbs)
Scanner Interface	USB 2.0 Type-C
Power Supply	Through USB 2.0 interface / 5 V, 270 mA
Operating System	Windows 10 / 11 (all 32- and 64-bit), Android 7.0 Nougat and later
Certifications	FBI, WHQL, CE, FCC, RoHS